



Webbs  
Helping people move since 1994

**Watersmead Close | Cannock | WS12 2GJ**

**Asking Price £220,000**





## Summary

**\*\* STUNNING END TERRACED \*\* IMMACULATE THROUGHOUT \*\* KITCHEN/DINER \*\* GREAT SIZED LOUNGE \*\* SUN ROOM/OFFICE \*\* TWO DOUBLE BEDROOMS \*\* FAMILY BATHROOM \*\* CUL-DE-SAC LOCATION \*\* WALKING DISTANCE TO HEDNESFORD HILLS \*\***

WEBBS ESTATE AGENTS are delighted to welcome to market the beautiful Watersmead Close a two bed end terraced . Watersmead Close is an excellent first time buyer home, you certainly will not be disappointed with the properties space, style and charm. Watersmead Close is immaculate throughout ready to move straight into . The property briefly comprises of two great sized bedrooms , a stylish kitchen/diner , great sized lounge, sun room/ office and a family bathroom.

### EXTERNALLY

The garden is fully enclosed and is the perfect space to unwind after a long day at work with off road parking . Watersmead Close is tucked away in a quiet cul-de-sac giving you added security and privacy . Location is perfect for all your local amenities. Hednesford Hills an area of outstanding natural beauty is within walking distance where you can get away from it all and immerse yourself in

## Key Features

- TWO BEDROOMS
- LOUNGE
- OFF ROAD PARKING
- SUN ROOM/OFFICE
- KITCHEN/DINER
- HIGHLY DESIRABLE LOCATION

## Rooms and Dimensions

### KITCHEN/DINER

11'9" x 9'9" (3.595 x 2.990)

### LOUNGE

14'1" x 11'10" (4.316 x 3.614)

### SUN ROOM/OFFICE

5'4" x 6'3" (1.634 x 1.910)

### MASTER BEDROOM

11'9" x 8'9" (3.591 x 2.690)

### BEDROOM TWO

9'9" x 8'4" (2.996 x 2.563)

### EXTERNALLY

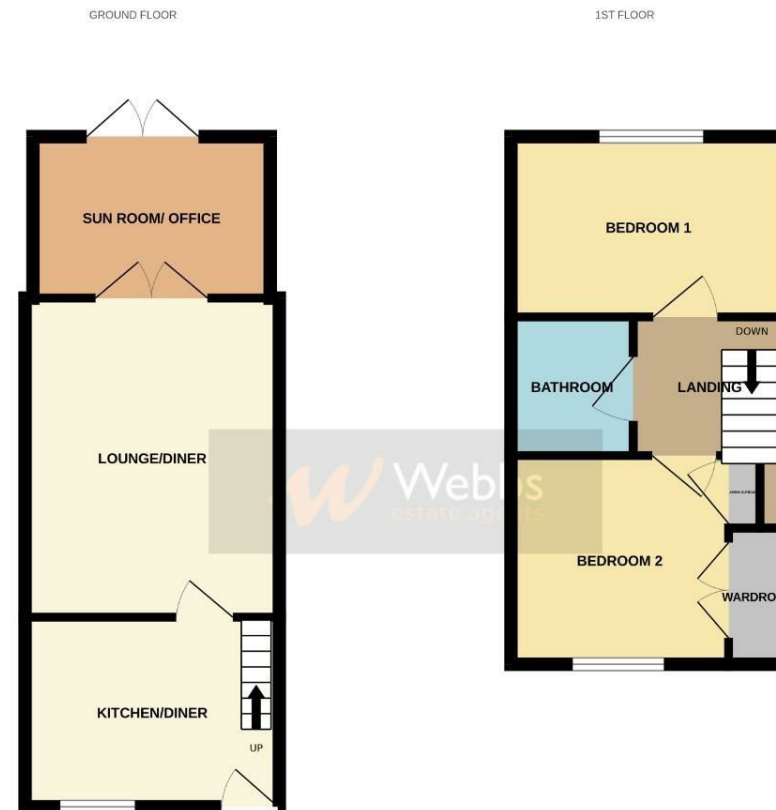
### FULLY ENCLOSED REAR GARDEN

### OFF ROAD PARKING

### IDENTIFICATION CHECKS - C

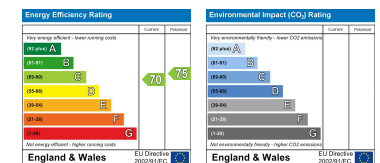






Whilst every attempt has been made to ensure the accuracy of the floorplan contained here, measurements of doors, windows, rooms and any other items are approximate and no responsibility is taken for any error, omission or mis-statement. This plan is for illustrative purposes only and should be used as such for any prospective purchaser. The services, systems and appliances shown have not been tested and no guarantee as to their operability or efficiency can be given.  
Made with Metroplan 62025

Webbs Estate Agents - endeavour to maintain accurate depictions of properties in Virtual Tours, Floor Plans and descriptions, however, these are intended only as a guide and purchasers must satisfy themselves by personal inspection.



153 Avon Road, Cannock, WS11 1LF

Tel: 01543 468846 | Email: [sales@webbestateagents.co.uk](mailto:sales@webbestateagents.co.uk) | [www.webbestateagents.co.uk](http://www.webbestateagents.co.uk)

